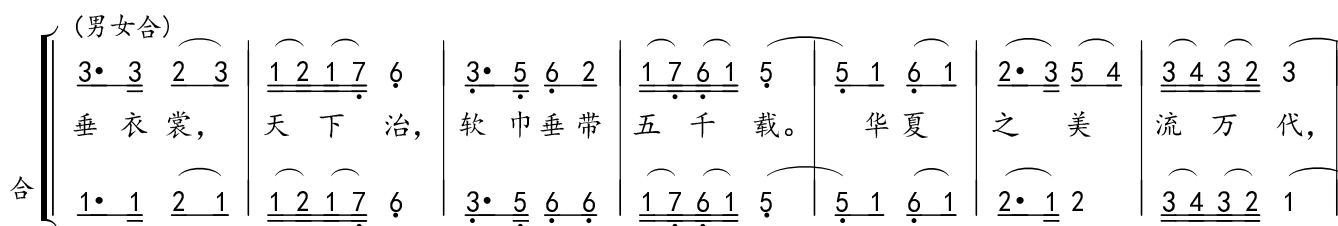
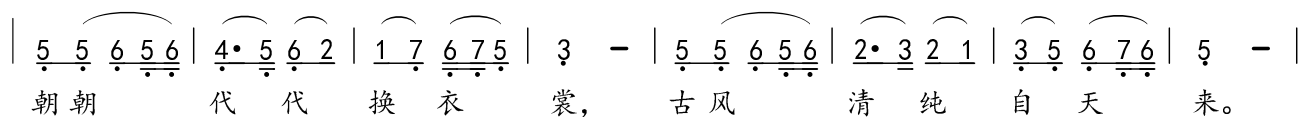
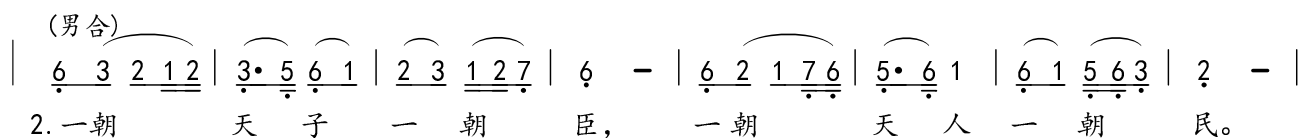
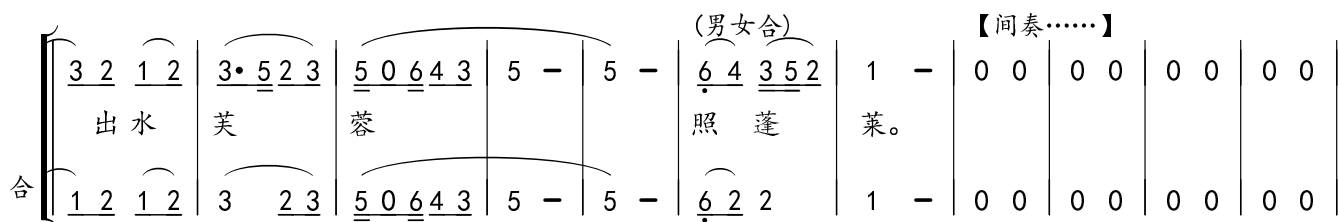
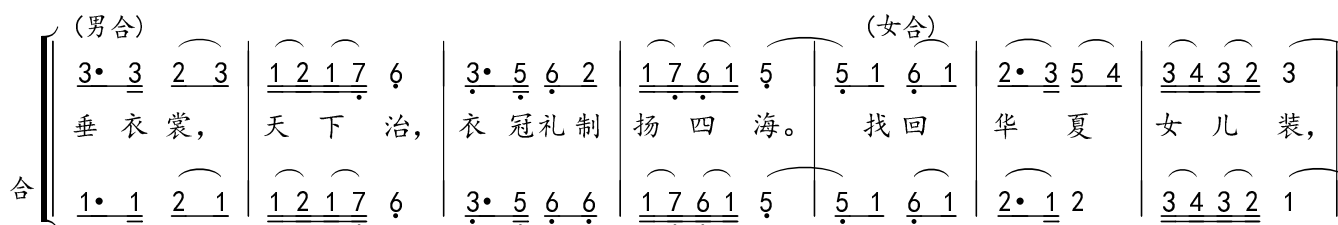
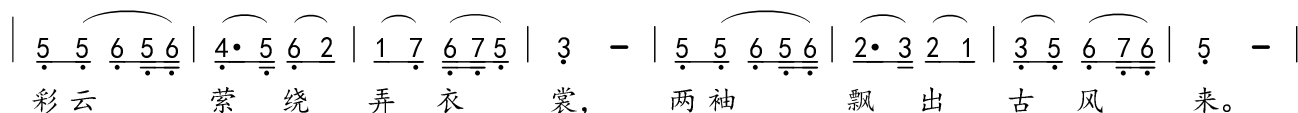
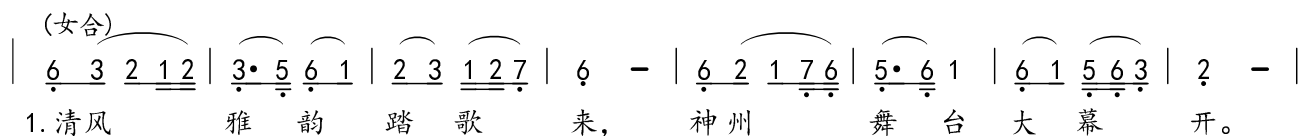


神州礼韵

紫云词
晓石曲

1 = G $\frac{2}{4}$



合	3 2	1 2	3• 5 2 3	5 0 6 4 3	5 -	5 -	6 4	3 5 2	1 -	:	rit	2• 3	4 6	6 -
	神州		礼	韵			溢	天	外。			溢	天	
合	1 2	1 2	3 2 3	5 0 6 4 3	5 -	5 -	6 2	2	1 -	:		2• 3	4 2	2 -

合	5 -	5 -	5 0	
	外。			
合	5 -	5 -	5 0	