

莲花颂

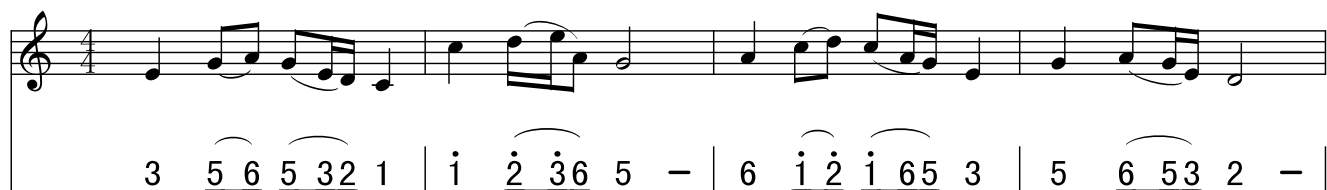
Lian Hua Song



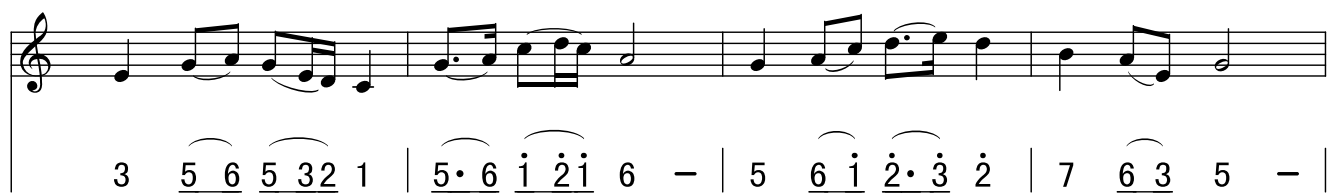
♩ = 70

1 = C $\frac{4}{4}$

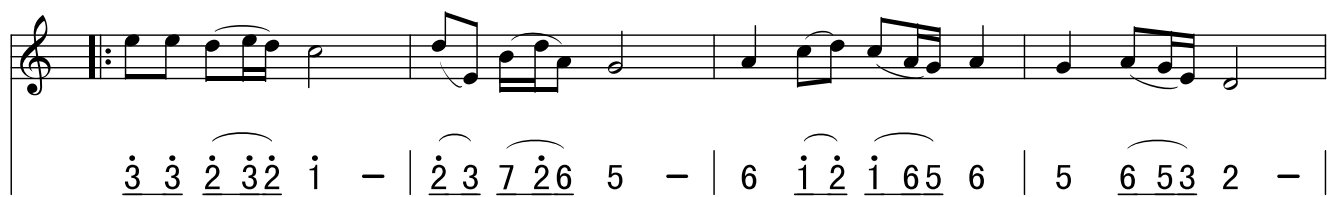
作词: 新韵
作曲: 新韵



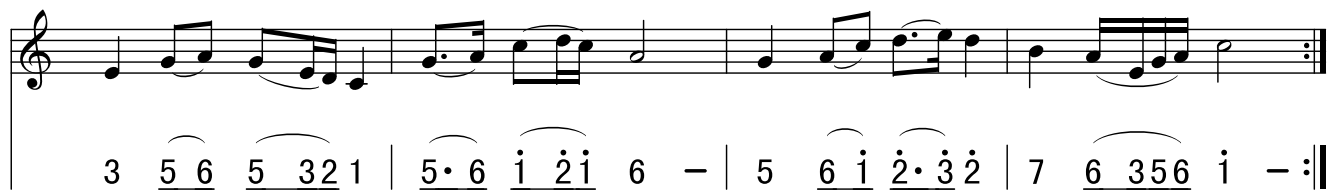
原本高洁自天来, 落入凡间红尘埋。
Yuan Ben Gao Jie Zi Tian Lai, Luo Ru Fan Jian Hong Chen Mai.



千年轮回万般苦, 只盼归真志未衰。
Qian Nian Lun Hui Wan Ban Ku, Zhi Pan Gui Zhen Zhi Wei Shuai.



师恩浩荡慈悲怀, 再启本性天门开。
Shi En Hao Dang Ci Bei Huai, Zai Qi Ben Xing Tian Men Kai.



随师正法了洪愿, 重化新宇一莲台。
Sui Shi Zheng Fa Liao Hong Yuan, Tong Hua Xin Yu Yi Lian Tai.